

A new diagnostic method for patient selection in clinical trials

iVW assay™

Select your patients

Guiding clinical trials

Maximize your success rate!

New tool for clinical trials
Malignant hematological diseases or advanced cancer

Find the right patient for your drug!

Qanta
scope



Guiding clinical trials



Oncology

Planning clinical trials in oncology can be very challenging in finding the right parameters for patient selection. Choosing an unreasonably broad range of patients can kill your drug candidate in a very early phase by reducing your success rate. Setting extremely specific criteria for participation can on the other hand limit your on-label use later when entering the clinical market.

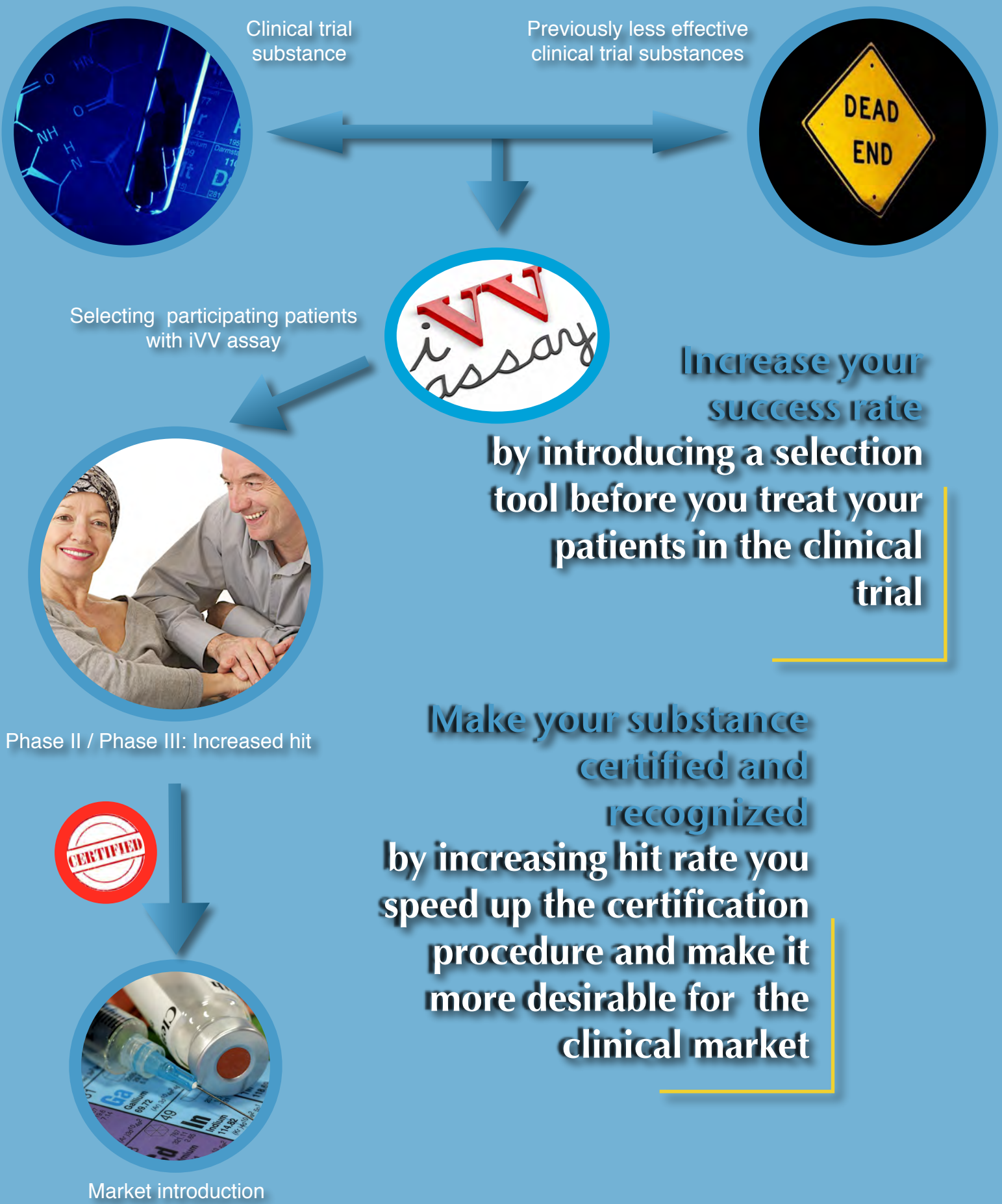
In an ideal situation, you can simply introduce a tool for in vitro diagnostic use, where the patient selection is not based on a diagnosis or a specified patient group but more dependent on a specific way of discrimination. At the same time, the very same method can be adapted as a clinical diagnostic device to more efficiently enter the clinical oncology protocols which are often very rigid and based on long term use evidences.

If the drug previously failed in Phase II or Phase III, but showed moderate effect, it can still be very potent on specific patients. It is more or less a question of finding the right patient for your drug candidate and it can suddenly manifest superior results.

Introducing the iVV assay™ platform in clinical trials would save invested capital and speed up the acceptance of the launched drug by the oncologists.

**Give your substance
another chance
you can resuscitate
previously failed drugs
that showed moderate
effect**

The clinical workflow

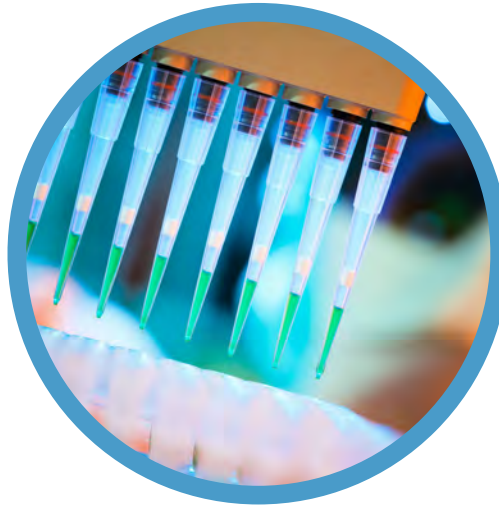


Make your substance certified and recognized by increasing hit rate you speed up the certification procedure and make it more desirable for the clinical market

Clinical introduction



Launched substance



Diagnostic laboratory



Choice of patient

WE ARE
HERE TO
HELP



Entering treatment protocols

Qanta
scope

Home: www.qantascope.com

E-mail: clinical.study@qantascope.com

